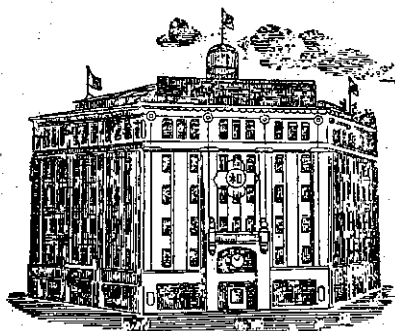


WHASHIN INDUSTRIAL CO., INC.



EXPORTERS-IMPORTERS
—AND—
MANUFACTURERS' REPRESENTATIVES

HEAD OFFICE: 21-9, CHO DONG,
CHUNG-KU, SEOUL, KOREA.
I. P. O. BOX NO. 1121 SEOUL
TEL. (26) 2161~9
CABLE ADDRESS: "WHASHIN SEOUL"
TELEX NO. 22385

PUSAN OFFICE:
49 2-KA CHOONGANG-DONG
PUSAN, KOREA

TOKYO OFFICE:
2-3, KITA AOYANA, 1-CHOME,
MINATOKU, TOKYO, JAPAN
CENTRAL P. O. BOX 754

Date. November 13, 1973

한인공업회 기증

ESTIMATION
of
SONY Brand L.L. System

<u>Item</u> <u>No.</u>	<u>Description</u>	<u>Q'ty</u>	<u>Unit</u> <u>Price</u>	<u>Amount</u>
<u>A) Teacher's Section: Control Room</u>				
1.	Teacher's control console, LLC-2R-48D	1 set	US\$1,889.-	\$1,889.-
2.	Master 2-track 2-channel stereo tape deck TC-707SD	3 "	\$451.80	\$1,355.40
3.	Remote Control Box RM-16 for TC-707SD	3 "	\$30.46	\$91.38
4.	Automatic Tape Stop, U-ATS-1 for TC-707SD	3 "	\$8.76	\$26.28
5.	Disc Player PS-552CE	1 "	\$120.50	\$120.50
6.	FM Stereo Receiver STR-6036AEP	1 "	\$156.50	\$156.50
7.	Remote Control Box RM-1300 for ER-740	1 "	\$592.-	\$592.-
8.	Program Control Unit PCU-6	1 "	\$359.40	\$359.40
9.	Monitor Speaker, SS-122A	1 pair	\$27.62	\$27.62
10.	Electret Condenser Microphone ECM-22P	2 sets	\$121.84	\$243.68
11.	Mic. Stand A-6N for ECM-22P	2 "	\$4.50	\$9.20
Sub-Total:				US\$4,870.96
<u>B) Students Section: Classroom</u>				
1.	Remote-Controlled Cassette Tape Recorder, ER-740	40 sets	\$244.20	\$9,768.-
2.	Headset, HS-27B=	40 "	\$16.42	\$656.80
Sub-Total:				US\$10,424.80
<u>C) Tapes, Cables etc.</u>				
1.	Super low-noise tape SLH-72-370-BLJ for TC-707SD.	30 rls	\$3.17	\$95.10
2.	Standard Tape Cassette C-60	500 pcs	\$0.75	\$375.-
3.	7-pole cable, 7P-100	800 m	\$93.59/100m	\$748.72
4.	5-pole Cable, 5P-100	800 m	\$58.16/100m	\$465.28
Sub-Total:				US\$1,884.10

- cont'd -

WHASHIN INDUSTRIAL CO., INC.

- 2 -

Item No.	Description	Q'ty	Unit Price	Amount
<u>D) Visual Program Section</u>				
1.	Video Camera AVC-3200S	1 set	\$348.90	\$348.90
2.	Zoom Lens, VCL-1206	1 "	\$168.40	\$168.40
3.	Sync Generator, CG-1	1 "	\$143.30	\$143.30
4.	Visual Aid, VID-100	1 "	\$135.-	\$135.-
5.	1/2-inch Video Tape Recorder, AV-3650	1 "	\$922.20	\$922.20
6.	9-inch TV Receiver/Monitor, CVM-950	1 "	\$176.-	\$176.-
7.	19-inch TV Receiver/Monitor, CVM-192U	4 "	\$296.80	\$1,187.20
8.	1/2-inch Video Tape, V-32 (60 min.)	10 ea.	\$26.79	\$267.90
9.	1/2-inch Video Tape, V-31 (30 min.)	10 "	\$11.81	\$118.10
Sub-Total:				US\$,497.-

E) Construction and Arrangement of L.L. Equip. & Video Equip.

1.	Coaxial Cable	60 meters	W350.-/m	W21,000.-
2.	M-Type connector	12 ea.	W500.-/ea	W6,000.-
3.	Booth Table and Chair	42 sets	W23,000.-/set	W966,000.-
4.	Wiring for L.L. & Video Equip.			W300,000.-
Sub-Total:				W1,293,000.- (US\$,232.50)

FOB TOTAL AMOUNT FOREIGN PURCHASE: US\$20,676.86
 Freight Estimated: \$240.-
 Insurance: \$205.-

 CIF TOTAL AMOUNT for Foreign Purchase: US\$21,121.86

Terms and Conditions:

- 1) Payments : By cash or cashier's check in US Dollars in favor of Sony Corporation, Japan.
- 2) Shipment : Within four(4) months after receipt of your ~~100% payment~~ payment by Sony Corporation, Japan.
- 3) This estimation will be valid until December 12, 1973.

Very truly yours,

WHASHIN INDUSTRIAL CO., INC.

Jae K. Lee
 Jae K. Lee
 Assistant Manager
 Trade Dept.